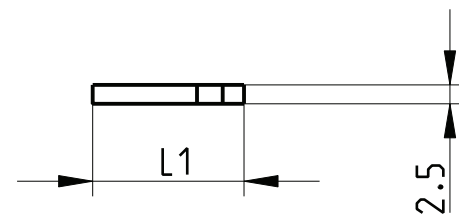
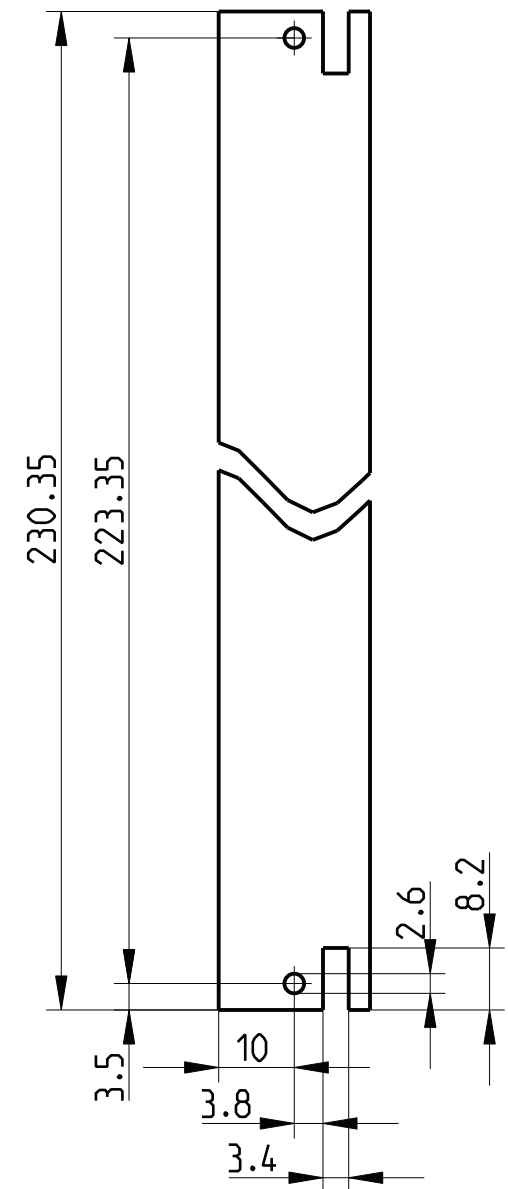
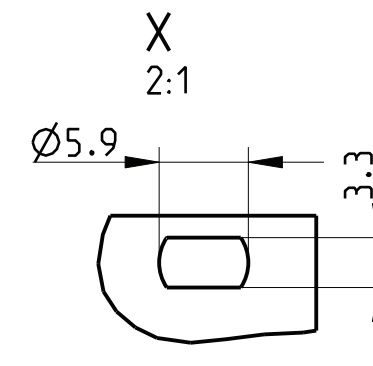
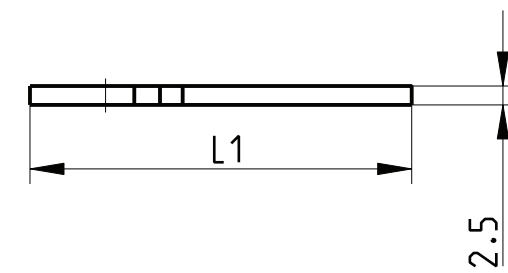
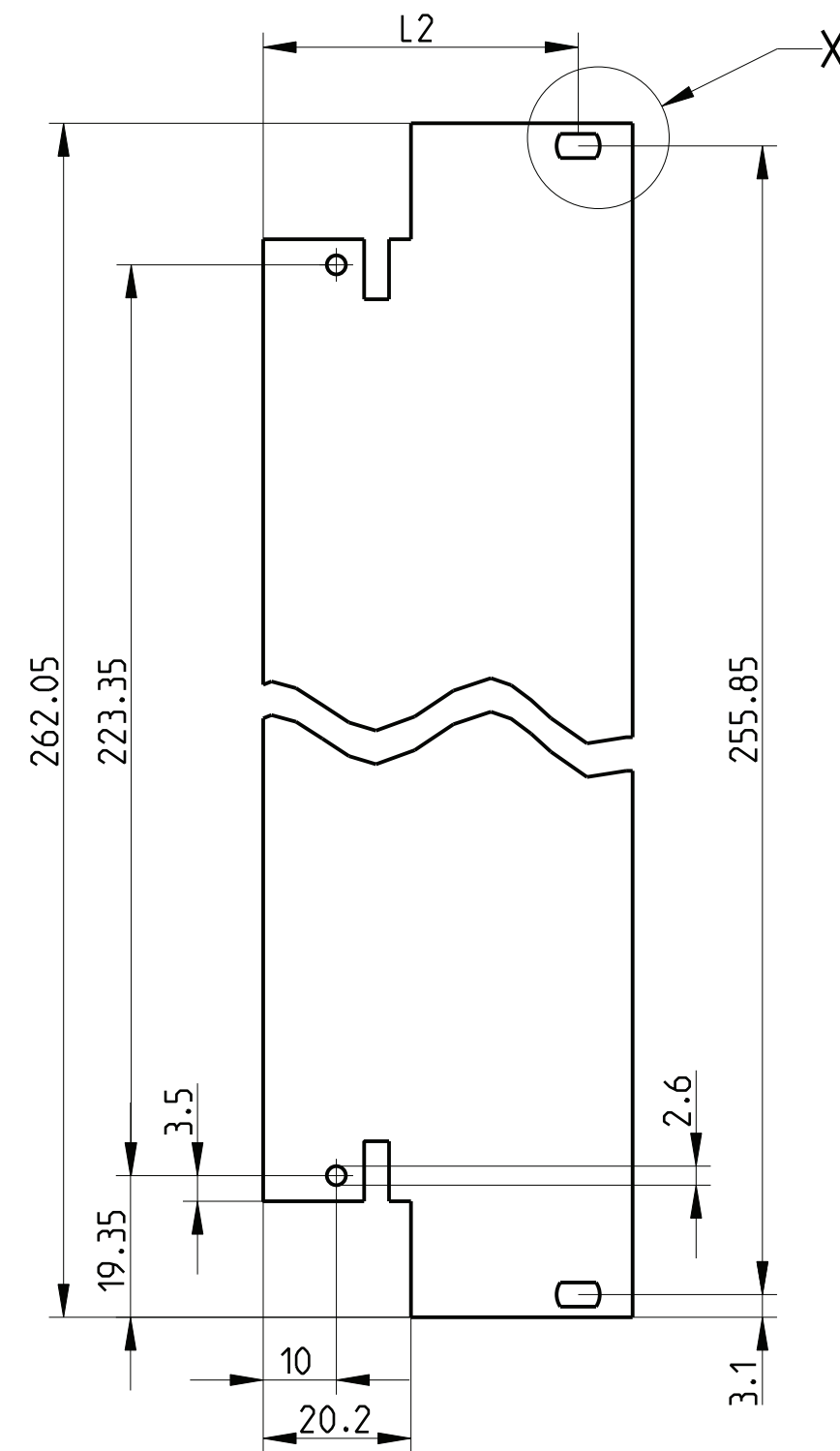


Variante A
gezeichnete Ausführung Z.-Nr.04
Drawn version dwg No 04



Variante B
gezeichnete Ausführung Z.-Nr.10
Drawn version dwg No 10



Art.Nr.	Zeichnungs Nr.	Var.	L1	L2
2) 3685508	226 216.0107.04	A	20.02	--
2) 3685509	226 216.0107.05	B	25.10	--
2) 3685510	226 216.0107.06	B	30.18	--
2) 3685511	226 216.0107.07	B	35.26	--
2) 3685512	226 216.0107.08	B	40.34	32.90
9905954	226 216.0107.09	B	45.42	37.98
2) 3685513	226 216.0107.10	B	50.50	43.06
	226 216.0107.11	B	55.58	48.14
2) 3685514	226 216.0107.12	B	60.66	53.22
	226 216.0107.13	B	65.74	58.3
3685515	226 216.0107.14	B	70.82	63.38
	226 216.0107.15	B	75.90	68.46
	226 216.0107.16	B	80.98	73.54

- 1) farblos eloxiert
clear anodised
- 2) Standardprodukt: alle weiteren Typen auf Anfrage
Standard product: all other types on request
- 3) Technische Aenderungen vorbehalten
Subject to change without notice
- 4) für Hebel-Ziehgriffe, einseitig
for injector/extractor handle, one sided

Dieses Bauteil unterliegt den Reglementierungen der RoHS Richtlinie und deren Umsetzung im ElektroG.

This component is subject to the RoHS directive and its applications within the Electrical and Electronic Equipment Act (ElektroG).

		Toleranzen tolerances		Oberfläche surface 1)		Maßstab/scale 1:1; 2:1		
						Aluminium		
		Date	02.09.96	Frontplatte 6HE flach Front Panel 6U flat		1 Blätter sheets Blatt sheet 1		
		Name	Bil./Frö.					
b		HT0120	27.05.13	Kör.	HEITEC		226 216.0107.04-16 MB b	
a		R269	27.04.05	Vish				
Rev.		Rev no.	Date	Name				

The reproduction, distribution and utilization of this document as well as the communication of its contents to others without explicit authorization is prohibited. All rights reserved in the event of a patent, utility model or design.

CAD