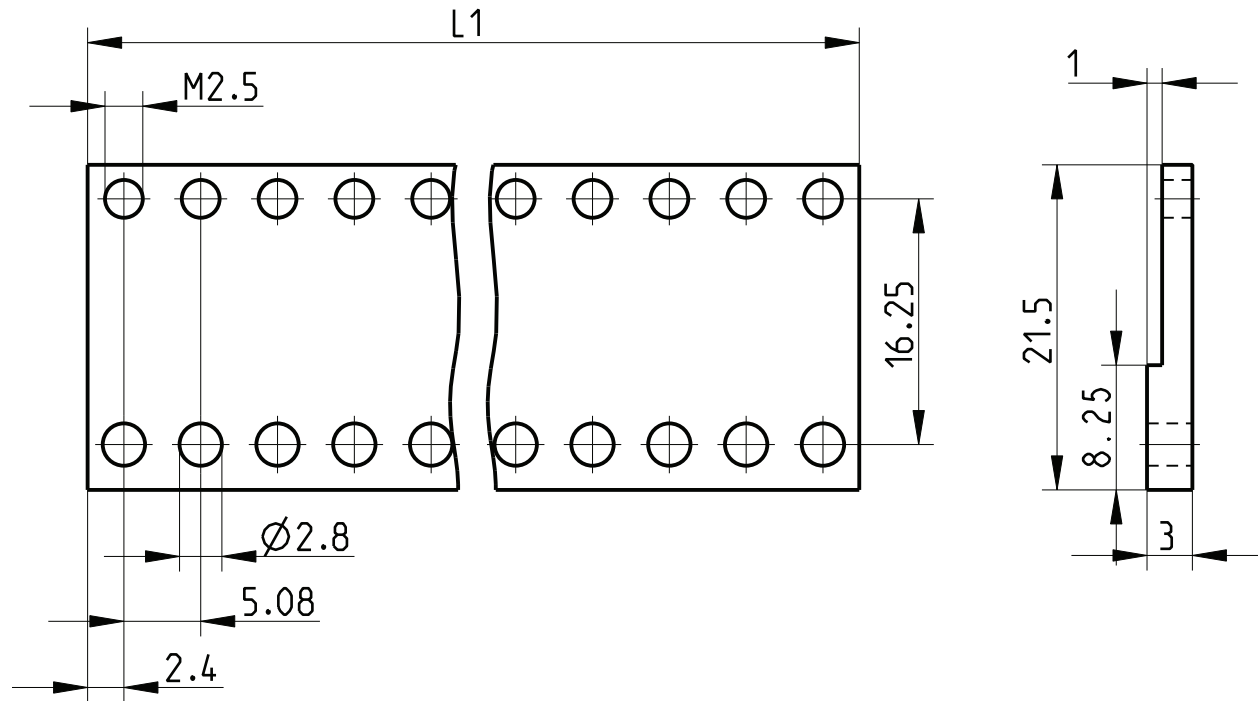


The reproduction, distribution and utilization of this document as well as the communication of its contents to others without explicit authorization is prohibited. Offenders will be held liable for the payment of damages. All rights reserved in the event of the grant of a patent, utility model or design.



1) matt gebeizt, farblos chromatiert
Clear chromated

2) Standardprodukt: alle weiteren Typen auf Anfrage
Standard product: all other types on request

3) Technische Aenderungen vorbehalten
Subject to change without notice

Dieses Bauteil unterliegt den Reglementierungen der RoHS Richtlinie und deren Umsetzung im ElektroG.

This component is subject to the RoHS directive and its applications within the Electrical and Electronic Equipment Act (ElektroG).

Art.Nr.	Zeichnungs Nr.	L1	Art.Nr.	Zeichnungs Nr.	L1
Part No.	Drawing No.		Part No.	Drawing No.	
2) 3684597	226 203.0394.01	4.78	2) 3684601	226 203.0394.50	253.70
	226 203.0394.02	9.86		226 203.0394.51	258.78
	226 203.0394.03	14.94		226 203.0394.52	263.86
	226 203.0394.04	20.02		226 203.0394.53	268.94
	226 203.0394.05	25.10		226 203.0394.54	274.02
	226 203.0394.06	30.18		226 203.0394.55	279.10
	226 203.0394.07	35.26		226 203.0394.56	284.18
	226 203.0394.08	40.34		226 203.0394.57	289.26
	226 203.0394.09	45.42		226 203.0394.58	294.34
	226 203.0394.10	50.50		226 203.0394.59	299.42
2) 3684598	226 203.0394.11	55.58	226 203.0394.60	304.50	
	226 203.0394.12	60.66	226 203.0394.61	309.58	
	226 203.0394.13	65.74	226 203.0394.62	314.66	
	226 203.0394.14	70.82	226 203.0394.63	319.74	
	226 203.0394.15	75.90	226 203.0394.64	324.82	
	226 203.0394.16	80.98	226 203.0394.65	329.90	
	226 203.0394.17	86.06	226 203.0394.66	334.98	
	226 203.0394.18	91.14	226 203.0394.67	340.06	
	226 203.0394.19	96.22	226 203.0394.68	345.14	
	226 203.0394.20	101.30	226 203.0394.69	350.22	
2) 3684599	226 203.0394.21	106.38	226 203.0394.70	355.30	
	226 203.0394.22	111.46	226 203.0394.71	360.38	
	226 203.0394.23	116.54	226 203.0394.72	365.46	
	226 203.0394.24	121.62	226 203.0394.73	370.54	
	226 203.0394.25	126.70	226 203.0394.74	375.62	
	226 203.0394.26	131.78	226 203.0394.75	380.70	
	226 203.0394.27	136.86	226 203.0394.76	385.78	
	226 203.0394.28	141.94	226 203.0394.77	390.86	
	226 203.0394.29	147.02	226 203.0394.78	395.94	
	226 203.0394.30	152.10	226 203.0394.79	401.02	
2) 3684965	226 203.0394.31	157.18	226 203.0394.80	406.10	
	226 203.0394.32	162.26	226 203.0394.81	411.18	
	226 203.0394.33	167.34	226 203.0394.82	416.26	
	226 203.0394.34	172.42	226 203.0394.83	421.34	
	226 203.0394.35	177.50	226 203.0394.84	426.42	
	226 203.0394.36	182.58	226 203.0394.85	431.50	
	226 203.0394.37	187.66	226 203.0394.86	436.58	
	226 203.0394.38	192.74	226 203.0394.87	441.66	
	226 203.0394.39	197.82	226 203.0394.88	446.74	
	226 203.0394.40	202.90	226 203.0394.89	451.82	
2) 3684600	226 203.0394.41	207.98	226 203.0394.90	456.90	
	226 203.0394.42	213.06	226 203.0394.91	461.98	
	226 203.0394.43	218.14	226 203.0394.92	467.06	
	226 203.0394.44	223.22	226 203.0394.93	472.14	
	226 203.0394.45	228.30	226 203.0394.94	477.22	
	226 203.0394.46	233.38	226 203.0394.95	482.30	
	226 203.0394.47	238.46	226 203.0394.96	487.38	
	226 203.0394.48	243.54	226 203.0394.97	492.46	
	226 203.0394.49	248.62	226 203.0394.98	497.54	
				226 203.0394.99	502.62

2) 3684602	226 203.0394.84	426.42
	226 203.0394.85	431.50
	226 203.0394.86	436.58
	226 203.0394.87	441.66
	226 203.0394.88	446.74
	226 203.0394.89	451.82
	226 203.0394.90	456.90
	226 203.0394.91	461.98
	226 203.0394.92	467.06
	226 203.0394.93	472.14
	226 203.0394.94	477.22
	226 203.0394.95	482.30
	226 203.0394.96	487.38
	226 203.0394.97	492.46
	226 203.0394.98	497.54
	226 203.0394.99	502.62

	Toleranzen tolerances		Oberfläche surface 1)		Maßstab/scale 2:1		Aluminium	
			Date	22.08.96	Z-Schiene Z-Rail		1 Blätter sheets	
			Name	Kör./Frö				
b	HT0120	27.05.13	Kör.	Prf.	Schaffer	(für Steckverb./for patch cord)		
a	R269	21.04.05	Vish					
Rev.	Rev no.	Date	Name	HEITEC		226 203.0394.01-99 MB b		
							Blatt sheet	1

CAD