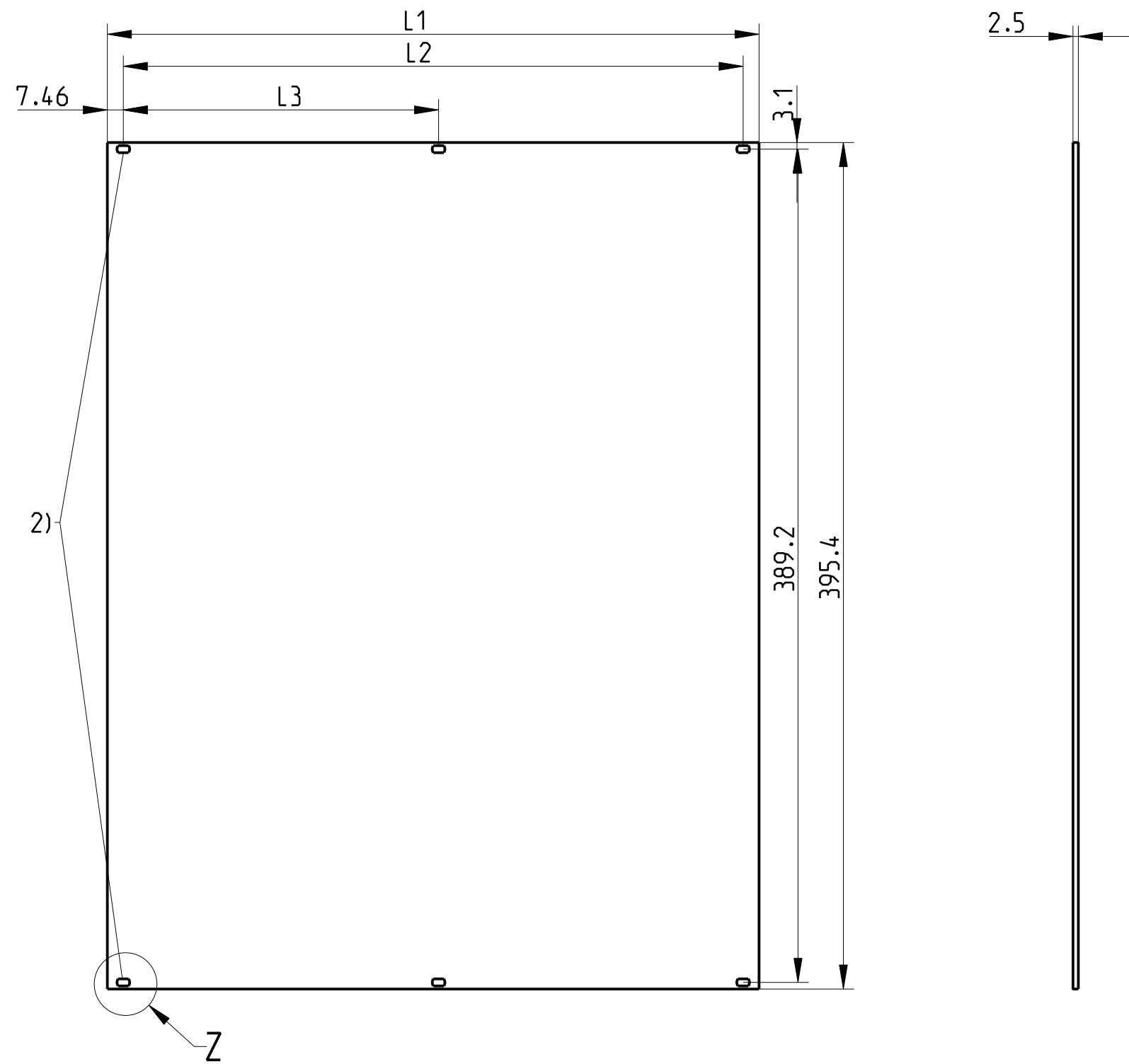
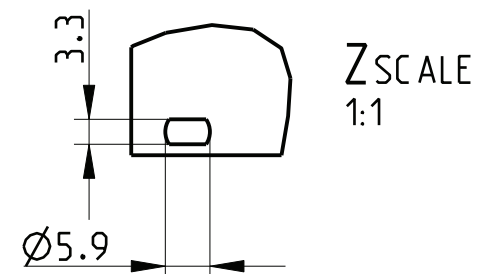


gezeichnete Ausführung Z.-Nr.60
signed design draw.-No.60



Art.Nr.	Zeichnungs Nr.	L1	L2	L3	Art.Nr.	Zeichnungs Nr.	L1	L2	L3
Part No.	Drawing No				Part No.	Drawing No			
3) 3684738	226 216.0136.02	9.84	---	---	226 216.0136.44	223.20	208.28	---	
	226 216.0136.03	14.92	---	---	226 216.0136.45	228.28	213.36	---	
3) 3684739	226 216.0136.04	20.00	---	---	226 216.0136.46	233.36	218.44	---	
	226 216.0136.05	25.08	---	---	226 216.0136.47	238.44	223.52	---	
	226 216.0136.06	30.16	---	---	226 216.0136.48	243.52	228.60	---	
	226 216.0136.07	35.24	---	---	226 216.0136.49	248.60	233.68	---	
3) 3684740	226 216.0136.08	40.32	---	---	226 216.0136.50	253.68	238.76	---	
	226 216.0136.09	45.40	---	---	226 216.0136.51	258.76	243.84	---	
	226 216.0136.10	50.48	35.56	---	226 216.0136.52	263.84	248.92	---	
	226 216.0136.11	55.56	40.64	---	226 216.0136.53	268.92	254.00	---	
3) 3684741	226 216.0136.12	60.64	45.72	---	226 216.0136.54	274.00	259.08	---	
	226 216.0136.13	65.72	50.80	---	226 216.0136.55	279.08	264.16	---	
	226 216.0136.14	70.80	55.88	---	226 216.0136.56	284.16	269.24	---	
	226 216.0136.15	75.88	60.96	---	226 216.0136.57	289.24	274.32	---	
	226 216.0136.16	80.96	66.04	---	226 216.0136.58	294.32	279.40	---	
	226 216.0136.17	86.04	71.12	---	226 216.0136.59	299.40	284.48	---	
	226 216.0136.18	91.12	76.20	---	226 216.0136.60	304.48	289.56	147.32	
	226 216.0136.19	96.20	81.28	---	226 216.0136.61	309.56	294.64	147.32	
	226 216.0136.20	101.28	86.36	---	226 216.0136.62	314.64	299.72	152.40	
	226 216.0136.21	106.36	91.44	---	226 216.0136.63	319.72	304.80	152.40	
	226 216.0136.22	111.44	96.52	---	226 216.0136.64	324.80	309.88	157.48	
	226 216.0136.23	116.52	101.60	---	226 216.0136.65	329.88	314.96	157.48	
	226 216.0136.24	121.60	106.68	---	226 216.0136.66	334.96	320.04	162.56	
	226 216.0136.25	126.68	111.76	---	226 216.0136.67	340.04	325.12	162.56	
	226 216.0136.26	131.76	116.84	---	226 216.0136.68	345.12	330.20	167.64	
	226 216.0136.27	136.84	121.92	---	226 216.0136.69	350.20	335.28	167.64	
	226 216.0136.28	141.92	127.00	---	226 216.0136.70	355.28	340.36	172.72	
	226 216.0136.29	147.00	132.08	---	226 216.0136.71	360.36	345.44	172.72	
	226 216.0136.30	152.08	137.16	---	226 216.0136.72	365.44	350.52	177.80	
	226 216.0136.31	157.16	142.24	---	226 216.0136.73	370.52	355.60	177.80	
	226 216.0136.32	162.24	147.32	---	226 216.0136.74	375.60	360.68	182.88	
	226 216.0136.33	167.32	152.40	---	226 216.0136.75	380.68	365.76	182.88	
	226 216.0136.34	172.40	157.48	---	226 216.0136.76	385.76	370.84	187.96	
	226 216.0136.35	177.48	162.56	---	226 216.0136.77	390.84	375.92	187.96	
	226 216.0136.36	182.56	167.64	---	226 216.0136.78	395.92	381.00	193.04	
	226 216.0136.37	187.64	172.72	---	226 216.0136.79	401.00	386.08	193.04	
	226 216.0136.38	192.72	177.80	---	226 216.0136.80	406.08	391.16	198.12	
	226 216.0136.39	197.80	182.88	---	226 216.0136.81	411.16	396.24	198.12	
3) 3684977	226 216.0136.40	202.88	187.96	---	226 216.0136.82	416.24	401.32	203.20	
	226 216.0136.41	207.96	193.04	---	226 216.0136.83	421.32	406.40	203.20	
3) 3684742	226 216.0136.42	213.04	198.12	---	3) 3684743	226 216.0136.84	426.40	411.48	203.20
	226 216.0136.43	218.12	203.20	---					



1) nur bei Ausführung 226 216.0136.02 - Ø2.4
only version 226 216.0136.02 - Ø2.4

2) farblos eloxiert
clear anodised

3) Standardprodukt: alle weiteren
Typen auf Anfrage
Standard product:
all other types on request

4) Technische Aenderungen vorbehalten
Subject to change without notice

Dieses Bauteil unterliegt den Reglementierungen der RoHS Richtlinie
und deren Umsetzung im ElektroG.

This component is subject to the RoHS directive and its applications
within the Electrical and Electronic Equipment Act (ElektroG).

		Toleranzen tolerances		Oberfläche surface 2)		Maßstab/scale 1:2.5; 1:1			
						Aluminium			
		Date	12.11.96	Frontplatte 9HE flach				1	
		Name	Kon./Frö	Front panel 9U flat				Blätter	
c	HT0120	27.05.13	Kör.	Prf.	Schaffer	als Leerplatzabdeckung		Blatt	
a	R269	27.04.05	Vish	HEITEC		as filler panel		sheet	
Rev.	Rev no.	Date	Name			226 216.0136.02-84 MB b		1	

Weitergabe sowie Vervielfältigung dieser Unterlagen, Verwertung und Mitteilung ihres Inhalts ist ohne schriftliche Genehmigung der HEITEC AG. Alle Rechte vorbehalten.

CAD