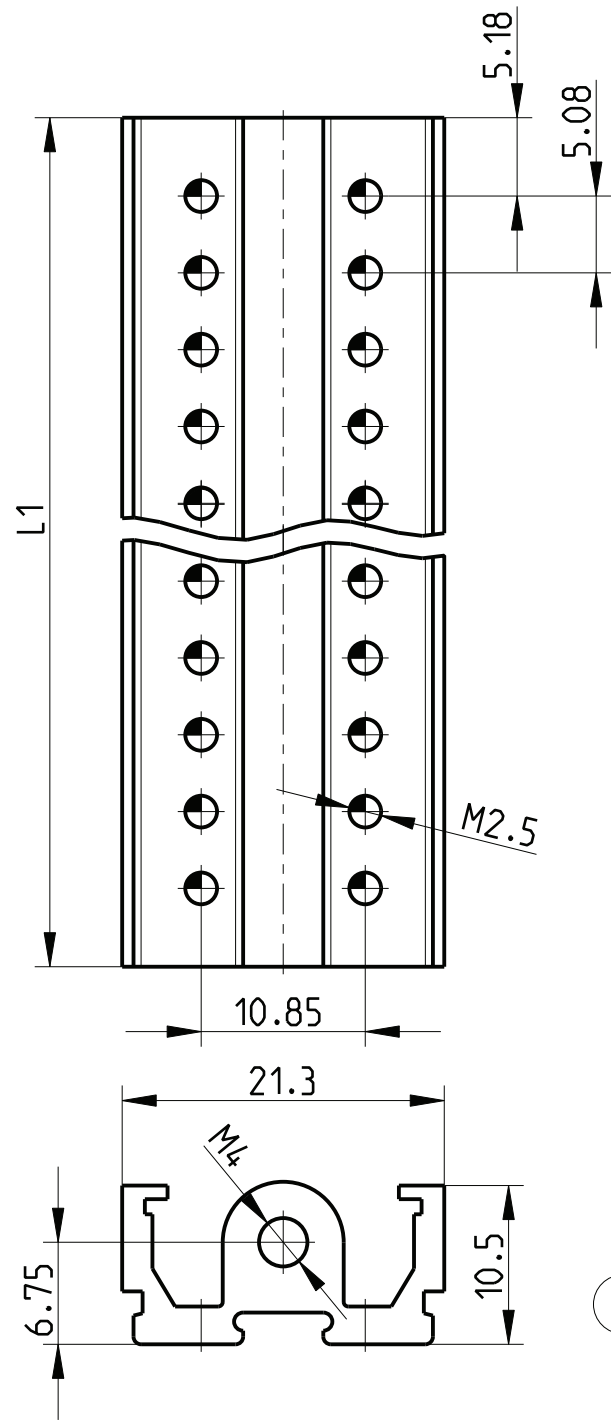


The reproduction, distribution and utilization of this document as well as the communication of its contents to others without explicit authorization is prohibited. Offenders will be held liable for the payment of damages. All rights reserved in the event of the grant of a patent, utility model or design.



1) matt gebeizt, farblos chromatiert
clear chromated

2) Standardprodukt: alle weiteren Typen auf Anfrage
Standard product: all other types on request

3) Technische Aenderungen vorbehalten
Subject to change without notice

Dieses Bauteil unterliegt den Reglementierungen der RoHS Richtlinie und deren Umsetzung im ElektroG.

This component is subject to the RoHS directive and its applications within the Electrical and Electronic Equipment Act (ElektroG).

Art.Nr.	Zeichnungs Nr.	L1	Art.Nr.	Zeichnungs Nr.	L1
Part No.	Drawing No.		Part No.	Drawing No.	
2) 3684579	226 203.0402.00	858.72		226 203.0402.50	259.28
	226 203.0402.01	10.36		226 203.0402.51	264.36
	226 203.0402.02	15.44		226 203.0402.52	269.44
	226 203.0402.03	20.52		226 203.0402.53	274.52
	226 203.0402.04	25.60		226 203.0402.54	279.60
	226 203.0402.05	30.68		226 203.0402.55	284.68
	226 203.0402.06	35.76		226 203.0402.56	289.76
	226 203.0402.07	40.84		226 203.0402.57	294.84
	226 203.0402.08	45.92		226 203.0402.58	299.92
	226 203.0402.09	51.00		226 203.0402.59	305.00
	226 203.0402.10	56.08		226 203.0402.60	310.08
	226 203.0402.11	61.16		226 203.0402.61	315.16
	226 203.0402.12	66.24	2) 3684581	226 203.0402.62	320.24
	226 203.0402.13	71.32		226 203.0402.63	325.32
	226 203.0402.14	76.40		226 203.0402.64	330.40
	226 203.0402.15	81.48		226 203.0402.65	335.48
	226 203.0402.16	86.56		226 203.0402.66	340.56
	226 203.0402.17	91.64		226 203.0402.67	345.64
	226 203.0402.18	96.72		226 203.0402.68	350.72
	226 203.0402.19	101.80		226 203.0402.69	355.80
	226 203.0402.20	106.88		226 203.0402.70	360.88
	226 203.0402.21	111.96		226 203.0402.71	365.96
	226 203.0402.22	117.04		226 203.0402.72	371.04
	226 203.0402.23	122.12		226 203.0402.73	376.12
	226 203.0402.24	127.20		226 203.0402.74	381.20
	226 203.0402.25	132.28		226 203.0402.75	386.28
	226 203.0402.26	137.36		226 203.0402.76	391.36
	226 203.0402.27	142.44		226 203.0402.77	396.44
	226 203.0402.28	147.52		226 203.0402.78	401.52
	226 203.0402.29	152.60		226 203.0402.79	406.60
	226 203.0402.30	157.68		226 203.0402.80	411.68
	226 203.0402.31	162.76		226 203.0402.81	416.76
	226 203.0402.32	167.84		226 203.0402.82	421.84
	226 203.0402.33	172.92	2) 3684582	226 203.0402.83	426.92
	226 203.0402.34	178.00		226 203.0402.84	432.00
	226 203.0402.35	183.08		226 203.0402.85	437.08
	226 203.0402.36	188.16		226 203.0402.86	442.16
	226 203.0402.37	193.24		226 203.0402.87	447.24
	226 203.0402.38	198.32		226 203.0402.88	452.32
	226 203.0402.39	203.40		226 203.0402.89	457.40
2) 3684963	226 203.0402.40	208.48		226 203.0402.90	462.48
	226 203.0402.41	213.56		226 203.0402.91	467.56
2) 3684580	226 203.0402.42	218.64		226 203.0402.92	472.64
	226 203.0402.43	223.72		226 203.0402.93	477.72
	226 203.0402.44	228.80		226 203.0402.94	482.80
	226 203.0402.45	233.88		226 203.0402.95	487.88
	226 203.0402.46	238.96		226 203.0402.96	492.96
	226 203.0402.47	244.04		226 203.0402.97	498.04
	226 203.0402.48	249.12		226 203.0402.98	503.12
	226 203.0402.49	254.20		226 203.0402.99	508.20

	Toleranzen tolerances		Oberfläche surface		Maßstab/scale 2:1	
			1)		Aluminium	
c	HT0120	27.05.13	Kör.	Date	06.09.95	Schiene H/M Horizontal Rail H/M für Backplane und Isolierprof. for back plane and isolation
b	R269	22.04.05	Vish	Name	Kör./Bi. Schaffer	
a	000464	17.06.97	Frö.	HEITEC		1 Blätter sheets Blatt sheet 1
Rev.	Rev no.	Date	Name			
						226 203.0402.00-99 MB c

CAD